

# SLAB View

## Emergency Release - Dense Gas Model

Model continuous and instantaneous releases for:

- ▶ Ground-level evaporating pool
- ▶ Elevated horizontal jet
- ▶ Stack or elevated vertical jet
- ▶ Ground-based instantaneous release

Import site maps in Shapefile, BMP, AutoCAD DXF, USGS DLG, and USGS LULC file formats to improve visualization of your modeling project.

Easily add new chemicals to the database.

Can display the footprint of the puff released to the atmosphere, a time dependent color puff, transparent contour plots, and X-Y plots showing maximum concentration versus downwind distances.

Full control over contour shading, contour color, fonts, annotation, wind direction, and more.



[www.argusoft.de](http://www.argusoft.de)

### The Best Option

SLAB View is the ideal tool for your Risk Management Plan (RMP) - 112(r). This popular model is used to predict hazardous zones and potential impacts of accidental chemical releases.

- ▶ More accurate prediction than DEGADIS, ALOHA, and CAMEO and easier to use.
- ▶ Avoids costly toxic endpoint overpredictions.
- ▶ Obtain model results in minutes, not days.

### Chemical Database

Don't waste time looking for chemical data. The extensive database of toxic chemicals will save you time and simplify your modeling project. The database is fully modifiable allowing you to add new chemicals.

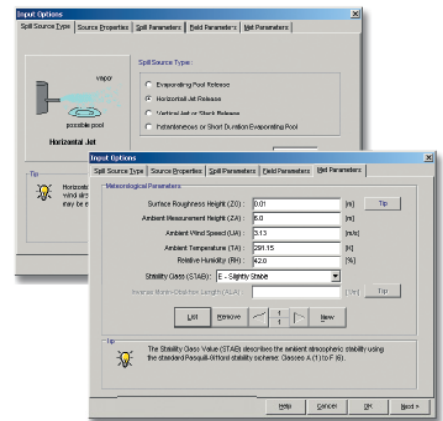
### Impressive Output

- ▶ SLAB View allows you to create impressive presentations of your model results.
- ▶ Graphically show the potentially affected areas.
- ▶ Transparent footprints.
- ▶ Unique time-dependent puffs.

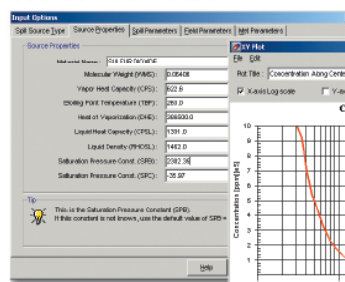
SLAB 3D View is a visualization tool for the SLAB model. SLAB 3D View dramatically improves visualization of accidental release predictions.

SLAB 3D View allows you to create animations of plume migration that can be incorporated into most presentation packages.

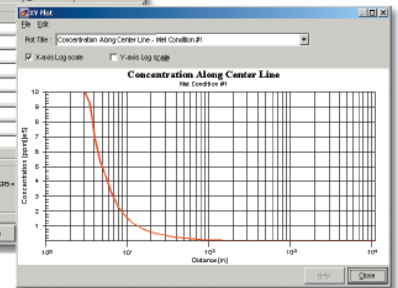
### Scenarios



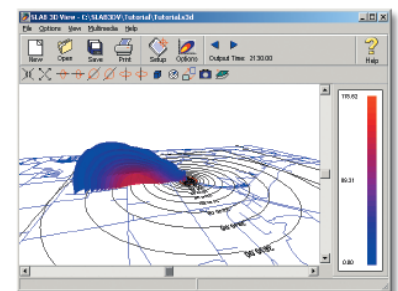
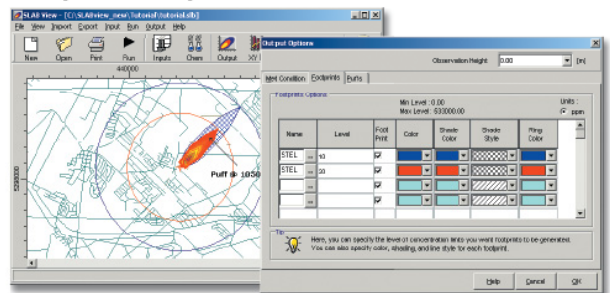
### Source Parameters



### Centerline Plot



### Exceptional Outputs



**Lakes**  
Environmental

[www.weblakes.com](http://www.weblakes.com)